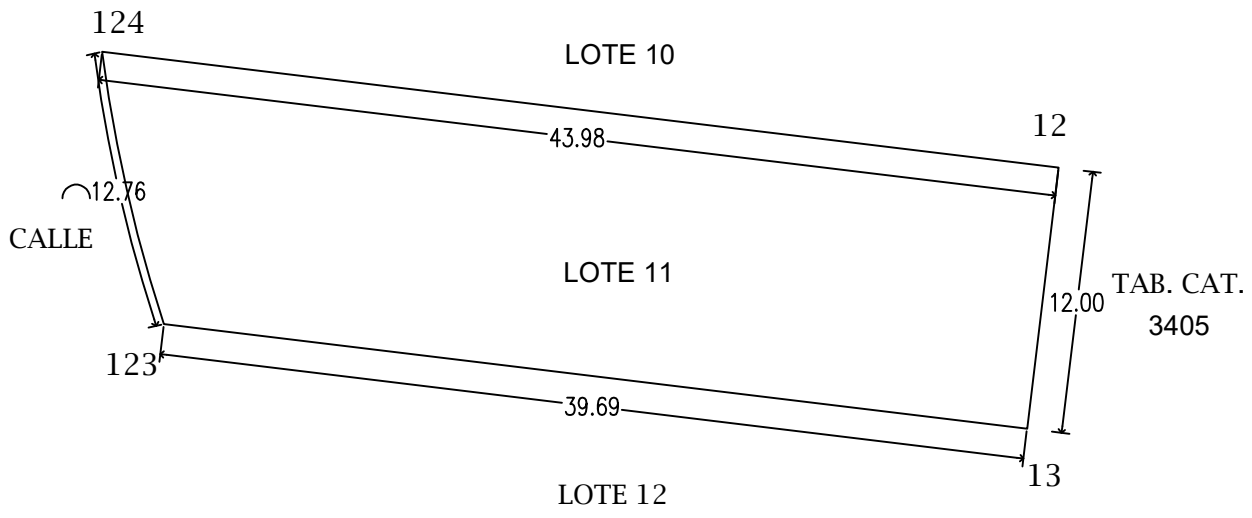
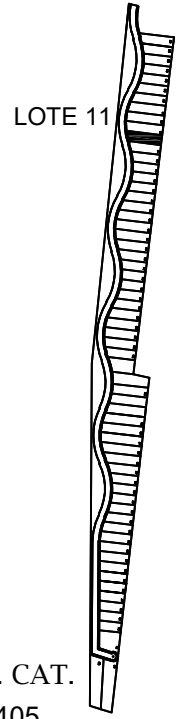
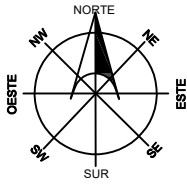


LOCALIZACION



| CUADRO DE CONSTRUCCION | | | | | COORDENADAS | |
|------------------------|------|---------------|-----------|---------|-------------|-------------|
| EST. | P.V. | RUMBO | DISTANCIA | VERTICE | X | Y |
| 124 | 12 | S 83°15'37" E | 43.98 | 124 | 261399.279 | 2346876.250 |
| 12 | 13 | S 6°54'9" O | 12.00 | 12 | 261442.943 | 2346870.964 |
| 13 | 123 | N 83°5'51" O | 39.69 | 13 | 261441.500 | 2346859.051 |
| 123 | 124 | N 12°47'10" O | 12.76 | 123 | 261402.100 | 2346863.821 |
| SUPERFICIE : 504.55 M2 | | | | | | |

ESCALA 1:350

| No. CAT | FINCA | TABLAJE | COLONIA | LOCALIDAD | MUNICIPIO | CLASE | USO |
|---------|-------|---------|---------|-----------|-----------|---------|-------|
| | | | | DZEMUL | DZEMUL | RUSTICO | SOLAR |

| VALOR DE TERRENO | | |
|------------------|------|-------|
| SUPERFICIE | Vxm2 | VALOR |
| 504.55 m2 | | \$ |

| AREAS TOTALES | SUPERFICIES |
|-----------------------|---------------|
| TERRENO | 41,940.424 m2 |
| CONSTRUCCION | |
| USO PRIVADO (TERRENO) | 504.55 m2 |
| COMUN DE TERRENO | 219.72 m2 |
| COMUN DE CONSTRUCCION | |

FACTOR DE INDIVISO .01727 %

| AREAS DEL DEPARTAMENTO | VALORES |
|------------------------|---------|
| CONSTRUCCION C.R. | |
| CONSTRUCCION PAJA | |
| USO PRIVADO (TERRENO) | |
| COMUN DE TERRENO | |
| COMUN DE CONSTRUCCION | |

DIBUJÓ
JULIO W. SALAZAR ORTEGA

PERITO VALUADOR: _____ REVISÓ: _____

DZEMUL, YUCATAN A 8 DE FEBRERO DE 2023

VALOR CATASTRAL